

# US Beltie News



THE OFFICIAL PUBLICATION OF THE BELTED GALLOWAY SOCIETY, INC.

## Season's Greetings

*President Mark Keller*

I am sitting here in disbelief that this is my last message that I am writing. It seems like only a few months ago that I assumed the role of BGS President. As I look back on all the things that have happened and have been accomplished, I am very proud to be associated with such a fine group of breeders and Council members. There have been marked improvements in the breed and also in the way that we promote our breed.

The beef studies and tenderness testing that have begun should be a stepping stone to a much brighter future for our breed. The promotion, advertising, and new website are all things that will also drive new breeders to our ranks. This is truly an amazing breed to be involved with.

I could not write this message without taking the time to talk to you about my favorite subject. The Beltie Youth Group is, in my opinion, the best thing that has happened

to my children and to this breed. The joy and appreciation that comes from some of these youngsters is uplifting to all of us. I have been in places where other breeds are talking about our youth program and the ability to show cattle. I am so proud to be around these young breeders and watch them interact with each other. The adults make me proud to be part of this great organization.

This has been a very rewarding time in my life and I would like to thank all of the Council members, Laura Glassman (PA) and Leanne Fogle (IL) for all of their help in the last two years. I am leaving you in tremendous hands with Ron Howard (ME) beginning 2010 as your new president. At this writing, I am not quite done with my term, as I still have the National show and the Belted Galloway Society Premium sale in Louisville to attend and administer. Please take a look at the new website that was just posted and thank you for being such a great group of people to work with.

### Inside this issue:

- Union Fair.....2
- Farmington Fair.....2
- Website .....3
- Keith Jones Judges in Australia ..3
- In the TV News.....3
- Castrating .....4
- Observe Breeding Bulls .....4
- Fryeburg Fair .....5
- New Members .....5
- Classified & Display ads..... 6-8



**Breeder Ashleigh Michael, AUS** exhibited Ashleigh Chantal at the Royal Melbourne Show in Australia. Chantal was Senior and Grand Champion Belted Galloway female, Supreme Belted Galloway Exhibit, and the Galloway Family Feature Interbreed Champion at the Royal Melbourne Show in Australia.



**Happy Holidays!**  
**Check out [www.beltie.org](http://www.beltie.org)**  
**for unique Beltie items!**

**About advertising ...** Classified ads are free to members and must reach the Society office before the last day of each month. All classified ads are automatically placed on the Hotline on the internet. Two-month limit on classified insertions. Please include contact information as you wish it to appear — name, farm, location, phone, Fax and Email, if any. For all Emails — **Place Hotline in the Subject line.** Please Phone to (717) 677-9655 or beltiecows@aol.com. We encourage members to submit ads the last two weeks of the month. Please be aware of the following ad schedule. Hotline Ads submitted by:

- January 30 — appear in March and April issues
- February 28 — appear in April and May issues
- March 31 — appear in May and June issues
- April 30 — appear in June and July issues
- May 31 — appear in July and August issues
- June 30 — appear in August and September issues
- July 31 — appear in September and October issues
- August 31 — appear in October and November issues
- September 30 — appear in November and December issues
- October 31 — appear in December and January issues
- November 30 — appear in January and February issues
- December 31 — appear in February and March issue

**Advertising bulls ...** Before advertising a young male as a breeder we must be sure he is well conformed, tracks properly, has good legs and feet, and exhibits good weight gains. We should have data available on his birth weight, 205-day weaning weight, and yearling weight. If he's reached breeding age (around 18 months), it's definitely a plus to have his semen checked for quantity and motility.

Any data available should appear in your advertisement along with his birth date and the names of his sire and dam. **Further, it is required that registration numbers be included on bulls advertised for sale in the Hotline and newsletter.**

## Newsletter Office ...

Leanne Fogle, Editor  
 Belted Galloway Society, Inc.  
 1496 County Road 125N Congerville, IL 61729  
 <leannef@mtco.com>  
 Phone/Fax (309) 965-2759

## Union Fair — ME

Exhibitors, Aldermere Farm (ME), Colby Wood Farm (ME), Moonshadow Farm (ME), Pine View Farm (ME), Prock Ridge Farm (ME).

*Senior Yearling Bull*, Moonshadow. *Spring Yearling Bull*, Aldermere Utah. *Senior Bull Calf*, Prock Ridge Bucky. *Junior Bull Calf*, Pine View Samson.

*Champion Bull*, Aldermere Utah. *Reserve*, Prock Ridge Bucky.

*Group of 2 Bulls*, Aldermere Farm.

*Senior Yearling Heifer*, Aldermere Teena. *Junior Yearling Heifer*, Prock Ridge Little Dot. *Spring Yearling Heifer*, Moonshadow Fiona. *Early Summer Yearling*, Prock Ridge Misti. *Late Summer Yearling*, Oatleys Farm Nelly. *Senior Heifer Calf*, Brookside Uriah. *Junior Heifer Calf*, Prock Ridge Barley.

*Champion Female*, Prock Ridge Misti. *Reserve*, Brookside Uriah.

*Get of Sire*, Aldermere Farm. *Two Females*, Prock Ridge Farm. *Pair of Yearlings*, Aldermere Farm. *Pair of calves*, Prock Farm. *Best 6 Head*, Prock Ridge Farm.

*Grand Champion of all Breeds*, Prock Ridge Misti.

## Farmington Fair — ME

Exhibitors, Bumpus Farm (ME), Colby Woods Farm (ME), Moonshadow Farm (ME), Pineview Farm (ME), Ponderosa Farm (ME), UMass (MA).

*Junior Bull Calf*, Pineview Samson. *Senior Bull Calf*, Colby Woods Doc. *Summer Yearling Bull*, Pineview Rocky. *Spring Yearling Bull*, Moonshadow Francis. *Two-Year-Old-Bull*, Moonshadow Elvis.

*Champion Bull*, Colby Woods Doc. *Reserve*, Moonshadow Francis.

*Group of Three Bulls*, Pineview Farm. *Group of Two Bulls*, Pineview Farm.

*Junior Heifer Calf*, Pineview Sasha. *Senior Heifer Calf*, UMass Pineview Maple. *Summer Yearling Heifer*, Pine View Kate-lyn. *Spring Yearling Heifer*, Moonshadow Firefly. *Senior Yearling Heifer*, Ponderosa Candy Red. *Two-Year-Old-Heifer*, Marbens Match

*Grand Champion Heifer*, UMass Pineview Maple. *Reserve*, Moonshadow Francis.

*Get of Sire*, Pine View Farm. *Pair of Yearlings*, Moonshadow Farm. *Group of Two Females*, Pineview Farm. *Group of Three Females*, Pineview Farm. *Pair of Calves*, Pineview Farm.

*Best Six Head*, Pineview Farm.

## Encourage Membership

Council has always encouraged members of the Society to sponsor a Society membership for any non-member who purchases Belted Galloway cattle. Council has now made it more affordable to do just that ... sponsor a membership. **Council has approved that an existing Society member, in good standing during the transfer of an animal to a non-member, may purchase a new Regular membership on their behalf. The discounted rate is half-price for their first year of membership with the Belted Galloway Society, Inc.** We encourage Society members to take advantage of this benefit when selling cattle to a new member prospect. It is a great way to market and promote the breed.

## Website

*Vice President Ron Howard*

Our Belted Galloway Society website found at [www.beltie.org](http://www.beltie.org) has been reformatted with some new features and layout. Our original site, thanks to the many years of great work by Jane Faul (KY) and others, offered an extraordinary amount of good information for Belted Galloway owners and enthusiasts. It was this volume of important information that led us to look for alternative formats that would allow users to navigate through and find information in a more convenient manner.

We all owe many thanks to Mark Keller (IL) for allowing us the use of his "webmaster" Eric Butler (IL) who has done a great job guiding us through the options and designs available and then pulling our wide ranging and diverse opinions into one attractive and easy to use design!

At this point and for the most part we have just redesigned the site but kept the original content intact. In this coming year we will be reviewing and updating that material where appropriate and would look forward to any thoughts and ideas you might have that will make the site most effective for you and others. I would encourage you to carefully review the site, keep in mind that it is a tool for both current Belted Galloway owners as well as prospective owners or interested parties and share with us any changes you would suggest.

We also expect these changes, as well as all future promotions directing people to this site, will make it an excellent marketing tool for breeders. You will note that after you access most pages a series of breeder ads rotate for the reader to view. You can find out more about advertising your farm here by contacting Laura Glassmann.

### Secretarial Phone Hours



Phone hours are Monday through Friday from 1 p.m. - 5 p.m. (EST). A detailed message may be left at any time. Phone: (717) 677-9655; Fax: (717) 677-9755.

Please send all your correspondence to Laura Glassmann, Secretary <[beltiecows@aol.com](mailto:beltiecows@aol.com)> P.O. Box 316, Bendersville, PA 17306.

## Time is Running Out Amnesty Ruling

June 1 –December 31, 2009

Any female, over the age of 24 months, may be registered/recorded for the fee of \$50.

## Keith Jones judges in Australia



**Ninety-seven entries** from Galloway, Belted Galloway and Miniature Galloway Breeds at the Royal Melbourne Show in Australia. Pictured is Judge Keith Jones, handler Melinda Kent and breeder/owner Ashleigh Michael with Ashleigh Chantal.

*The Weekly Times, Australia* reported "there was no big hat, cigar or Cuban heels for American Keith Jones, judge of the Galloway breeds at the Royal Melbourne Show. Instead, here was a judge with an animal-science qualification from Indiana's famed Purdue University judging what many commercial cattlemen regard as hobby cattle." At the Melbourne Show, Mr. Jones presided over the three Galloway breeds - Belted Galloway, Galloway and the Miniature Galloway. There were total entries of 97 cattle on account of 25 breeders. Ashleigh Michael's Ashleigh stud from Leongatha was the most successful exhibitor in the Belted Galloways, while Di and Cameron Woolfe's Wilkamdai stud from Red Hill won the Miniature Galloways and Allen and Liz Snaith from Clonbinane the Galloways.

Ashleigh Michael's two-year-old Belted Galloway heifer was the supreme exhibit in the Galloway family feature show! Keith was presented with an unique gift of an Australian Rain stick! *Way to go Mate!*

## In the TV News

Greg Hipple (IA) reported that during an episode of RFD's *This Week In Agribusiness* with Orion Samuelson, Belted Galloway cattle appeared in the background of salute to beef in the program's monthly segment. The cattle were in the beef tent at Farm Tech Days in Wisconsin. Cathy & Al Stern's Belties along with Dr. Vic Eggleston were all viewed in the background.

## Tattoo reminder...

The Year Code on tattoos for animals born in year 2009 is

W



## Castrating

The 2008 National Animal Health Monitoring System (NAHMS) data indicates 77% of bull calves in the U.S. are castrated before marketing and 75% of those are castrated before three months of age. With regard to age at castration, does the science support this timing or should we delay castration of bulls to gain some additional weight?

Virtually every study indicates a bull calf will outweigh a non-implanted steer calf at weaning. But what happens if we castrate that bull at weaning or even months later?

There have been hundreds of studies looking at everything from stress to muscle tenderness; if you want to prove something you can find at least one study that will support your bias. But what happens when we combine the studies to make best management practice recommendations?

- In nearly every case, studies that compare implanted steers to intact bulls at weaning show no difference in weaning weight. Low-dose implants given at 2-4 months of age are one of the most underutilized technologies in the beef industry. This suckling implant will add about 20 lbs. to calf weaning weight.
- Calves castrated (surgically, banded or emasculatome) at or after weaning show increased stress, sickness and death loss. This becomes not only a financial issue — less profit for the feedlot — but an animal-welfare issue.
- Calves castrated after weaning have increased gain up until the time of castration. But when compared to calves castrated at less than three months of age, those castrated late in life weigh 20 lbs. less at slaughter and are marketed 12 days later than those castrated early in life. Although a bull weighs more than a steer (non-implanted) at weaning, the stress of castration at this later age sets the calf back and he never catches up.
- There seems to be no difference in using a rubber band or a knife to castrate calves less than three days of age. If you've never banded a baby calf, be sure you "count to two" before securing the band. Your veterinarian may say some unkind words if he has to peel a testicle away from the scar tissue that is around that retained testicle some months later.
- In an ideal world, a calf would be castrated after a full belly of colostrum is ingested, but I know how hard they can be to catch at 24 hours of age.
- Calves castrated before three months of age show no differences in performance, health and carcass traits to calves castrated soon after birth.
- A bull calf has a relatively modest increase in testosterone production up until about seven months of age, so the "testosterone advantage" is minimal up to that point. The negatives of castrating late nearly always outweigh this minor benefit.
- Bulls castrated over 500 lbs. tend to have less marbling than bulls cut earlier. Beef tenderness ratings also decrease the heavier bulls are at time of castration. This becomes quite pronounced for bulls weighing more than 900 lbs. at time of castration.

- Bull calves are and should be discounted at feeder auctions. A 500-lb. bull will sell at a \$5-\$7/cwt. discount to his 500-lb. steer mate. As bulls get heavier, the discount increases even more.

Castration of bull calves soon after birth is ideal in terms of physiology (lower stress). It also results in improved animal welfare, improved health and gain in the feedlot, and enhanced marbling and tenderness compared to castration at or after weaning. Castration at less than three months of age is a reasonable alternative to castration soon after birth. View the NAHMS survey results at: [nahms.aphis.usda.gov/beefcowcalf/](http://nahms.aphis.usda.gov/beefcowcalf/).

## Observe Breeding Bulls

*Glenn Selk, OSU Extension Cattle Reproduction Specialist*

The fall breeding season is about to begin. Herds that aim for a September 1 first calving date, will turn bulls with the cows in the latter part of November.

A good manager keeps an eye on his bulls during the breeding season to make sure that they are getting the cows bred. Occasionally a bull that has passed a breeding soundness exam may have difficulty serving cows in heat, especially after heavy service.

While conducting a research trial several years ago, I was collecting data on the ability of a bull to breed synchronized cows. The bull (being observed) was mature and had been successfully used in the past. Also he had passed a breeding soundness exam. However, it was apparent immediately that he could no longer physically breed females in estrus. Replacing him immediately was the only solution. If we had not been present to observe the problem, an entire calf crop for that breeding pasture was in jeopardy.

Inability to complete normal service and low semen quality are more likely to be problems that affect breeding performance than failure to detect cows in heat. Nonetheless poor libido (sex drive) can occasionally be observed in beef bulls. Such problems can best be detected by observing bulls while they work. Therefore producers should (if at all possible) watch bulls breed cows during the first part of each breeding season. If problems are apparent, the bull can be replaced while salvaging the remainder of the breeding season and next year's calf crop. Likewise a small proportion of bulls can wear out from heavy service and lose interest. These, too, will need to be replaced. The greater the number of cows allotted to each bull in the breeding pasture the more critical it is that every bull be ready to work every day of the breeding season.

Injuries to bulls during the breeding season are relatively common. When a bull becomes lame or incapable of breeding, because of an injury to his reproductive tract, he needs to be removed from the breeding pasture and replaced with another bull.

## In the TV News

Greg Hipple (IA) reported that during an episode of RFD's *This Week In Agribusiness* with Orion Samuelson, Belted Galloway cattle appeared in the background of salute to beef in the program's monthly segment. The cattle were in the beef tent at Farm Tech Days in Wisconsin. Cathy & Al Stern's Belties along with Dr. Vic Eggleston were all viewed in the background.

## Fryeburg Fair — Maine

With one well-worn, battered blue suitcase, James Kopel of Moline, IL spent the past 11 years attending every state fair in the United States. By car and airplane, he figures he traveled about 80,000 miles – about half by air – and spent up to \$40,000 to attend the official state fair in 41 states and the unofficial, but main event, in 11 others.

Wearing his John Deere cap and walking shoes and carrying a map of the fairgrounds, the affable, retired Black Hawk College professor, Kewanee, IL traversed the fairgrounds, sampling the food and viewing the livestock shows, 4-H exhibits and commercial tents at each one.

To say Kopel is an expert on state fairs is an understatement. He created a state fair evaluation form on his laptop computer, rating each state fair on 90 variables, including quality and affordability of food, cleanliness and accessibility of fairgrounds and exhibits, courteous office staff, variety of entertainment and educational experience.

Kopel collected volumes of data and memorabilia along the way and hopes to write a book on his findings to guide others who love state fairs. Kopel, 68, relishes the big question of why he made visiting state fairs in all 50 states his personal mission. The answer is: Because he could. He had the time and the inclination.

Growing up on a farm near Marshalltown, Iowa, Kopel raised and showed Chester White swine at his first Iowa state fair at age 10 in Des Moines. He's loved state fairs ever since, even as they've grown more commercial. There's an old saying, he said, that you can take the kids off the farm, but you can't take the farm out of the kid. "That's me," he said.

He and his wife, Harlene, traveled to state fairs in their RV after retiring, and visited 10 before her death. "After she died, it became an obsession, partly to honor her." He said.

Kopel visited the remaining 40 by airplane and rental car, with a Global Positioning System to guide him from airport to hotel to fairgrounds and back again.

**His best experience was at the Fryeburg Fair in Maine, which drew exhibitors from Maine and New Hampshire. "It was one of the cutest state fairs you've ever seen," he said.**

**He said he felt like he had stepped back in time the moment he arrived at the fairgrounds. The wood grandstand was decked in red, white and blue bunting, and a harness horse race was the daily feature. Each barn was small, but immaculate with six barns devoted to oxen.**

**He felt he should have dressed in a straw hat, bow tie, cuffed long sleeves and suspenders. There were antique equipment displays and an antique family kitchen where the women wore period dress and served fresh-baked apple crisp. "They put on a really nice show," he said.**

But there is no better state fair than the Iowa State Fair,

one of the oldest, largest agricultural and industrial expositions in the United States, Kopel said.

It has well-placed benches, shady trees and beautiful landscaping throughout the fairgrounds, he said adding its buildings attract exhibits year-round, a growing trend among state fairs.

Exhibitors, Aldermere Farm (ME), Colby Woods Farm (ME), Marben Farm (CT), Meadowlark Homestead Farm (ME), Meadow View Farm (VT), Mitchell Ledge Farm (ME), Moonshadow Farm (ME), Pineview Farm (ME), Pondersosa Farm (ME), Prock Ridge Farm (ME), Smith Farm (ME).

*Spring Heifer Calf*, Aldermere Wiga. *Junior Heifer Calf*, Pineview Sasha. *Winter Heifer Calf*, Prock Ridge Jitterbug. *Senior Heifer Calf*, Aldermere Ulla. *Summer Yearling Female*, Prock Ridge Misti. *Spring Yearling Female*, Aldermere Ulga.

*Junior Champion Female*, Aldermere Ulga. *Reserve*, Moonshadow Firefly.

*Junior Yearling Female*, Prock Ridge Little Dot. *Senior Yearling Female*, Aldermere Tiaka. *Two-Year-Old Female*, Marbin's Tinsil.

*Senior Champion Female*, Prock Ridge Little Dot. *Reserve*, Aldermere Urga.

*Grand Champion Female*, Aldermere Ulga. *Reserve*, Alderem Ulla.

*Spring Bull Calf*, Meadow View Don Justice. *Junior Bull Calf*, Ponderosa Elvis. *Winter Bull Calf*, Colby Woods Doc. *Senior Bull Calf*, Aldermere Upendo.

*Junior Bull Champion*, Meadowview Don Justice.

*Spring Yearling Bull*, Aldermere Utah. *Junior Yearling Bull*, Aldermere Utam.

*Senior Bull Champion*, Aldermere Utam. *Reserve*, Aldermere Utah.

*Grand Champion Bull*, Aldermere Utam. *Reserve*, Meadowview Don Justice.

*Pair of calves*, Aldermere Farm. *Pair of Yearlings*, Aldermere Farm. *Group of Two Bulls*, Aldermere Farm. *Group of Two Females*, Aldermere Farm. *Get of Sire*, Aldermere Farm.

## New members

Sally J Durbin, SANDY PINE RIDGE, 9324 W. 150N, Angola, IN 46703 (260) 829-6258.

Brian & Brittany Joas, WM. A CLIFFORD HOMESTEAD FARMS, 176 Langford Rd., Candia, NH 03034 (603) 483-5414.

Christine Joost, COOK FARM, 16 Cook Farm Rd., Verona Island, ME 04416 (207) 469-3146.

Nancy, La Rowe, HOGWASH FARM, 97 Kerwin Hill Rd., Norwich, VT 05055 (802) 649-8807.

*Junior* Bradley T., Perkins, Jr., Perkins Farms, 1251 Leafdale Rd., Hodgenville, KY 42748 (270) 358-9337.

*Junior* Emme Reschke, W7230 Brick Church Rd., Wadsworth, WI 53184 (608) 886-0001.

Max Jr. & Deanna Shaffer, TRIANGLE FARM, 226 Akers Road, Clearville, PA 15535 (814) 784-3389.

Emily & Larry Springer, WHISPERING WINDS FARM, 6895 Haggerty Rd., Hillsboro, OH, 45133 (937) 402-4023.



Michael D. Caldwell  
Lorna M. Caldwell

*Heritage Breed  
Old World Genetics*

1.877.846.5721 or 715.457.6765  
3138 Yellowstone Road, Milladore WI 54454

*beltiebeef.com  
caldwellfarms.com*

## For Sale


**OHIO.** Herd bull Highland Farm Aaron 10381B (dob 3/10/05). Excellent herd bull for increasing frame size and carcass definition. Gentle disposition and produced 100% calf crop each year with calves around 50-55 #. Moving daughters into herd for replacement heifers and must sell or ship to stockyard. Call John McKinney at 937-788-2734 or e-mail at John\_dejamoo@ctcn.net. 12/31

**MISSOURI.** Herd bulls for sale: Sunnybrook Corona 11273B (dob 8/5/07) sired by two time Sire of the Year Linetree's Pistol Pete (pedigree is Anderson Hill/Beaver Dam). This bull is an outstanding, large framed, full bodied, very gentle bull. Hide-A-Way Hills Joe Montana 8801B (dob 3/4/03) sired by Lifetime Gold Achiever Hide-A-Way Hill Red Trubador (pedigree is Aldermere/Stoncroft). Two years of outstanding, quality progeny on the premises. Also, herd bull prospect Irish Oaks Farm Leprechaun 11741B (dob 12/12/07). This line-bred Green Arpents bull is a top notch candidate (pedigree is Green Arpents/Stoncroft/Aldermere). Please call Janet Moyer at 417-207-1234 or email info@belties.net. 12/29

**Beltie children's book/Cow tales anthology.** Discount for society members through 12/12/09. Signed copies for retail price, includes shipping to lower 48 states. Prices at www.whitneyfarmstead.com or e-mail waf227b@charter.net for details. Descriptions of books at www.truecowtales.com and http://shapatopublishing.com/CRLindemer.htm. 12/16

**TEXAS.** Registered black Belted Galloway bull. Southern Rose Zip 11903B (dob 11-23-08). Sire: C.F. Francine's Haggis, Dam: Quail Ridge Farm Zipporah. Please Email Donna and Steve Cummins, Southern Rose Ranch, Chappell Hill (near Brenham) for pictures at SouthernRoseRanch@yahoo.com or call (979) 251-7871. 12/15

**MINNESOTA.** Golden Pond Farm Pelican Rapids has registered Belties for sale. One 2-year old heifer, three yearling heifers, two heifer calves and one steer calf. Please call 218-863-5001 or email jeaskelson@yahoo.com for more information.



**Exceptional herd ~ Exceptional genetics**

Bec Tolman 315-655-0623 Marc Schappell Tom Anderson

**VERMONT.** Belted Galloways from a diversified, high quality, genetic base. Animal Welfare Approved (www.animalwelfareapproved.org) farm that has been 100% all grassfed since inception in 1997. Management intensive grazing and excellent forage are our specialty. All easy keepers, halter trained with pleasant temperaments. Contact Brud McCabe, Caleamont Farm, (802) 748-5107 or caleamont@hughes.net. 12/14

**OKLAHOMA.** Herd Reduction. Two cows (DOB 3/4/02 & 12/1/06), one with heifer calf (DOB 4/13/09), exposed to Cardinal Diablo (8471B). Both produce nice calves. Midge Graves & Bud Hammons, OK Hills Farm, Coyle, OK (405) 612-2716 or mgraves@rollton.com. 12/9

**MICHIGAN.** Herd Dispersal: Clifford Lake Acres is selling Herd Sire Sholtey's B&B Paddy along with 11 Registered Belted Galloway Cows and numerous Belted Galloway Heifers. Paddy is a halter broke, excellent tempered, five year old bull producing calves with very good conformation. His outstanding bloodlines include Gold Lifetime Award Winners Mar-Pine Viking and Bolebec Dun Controller. Sire: Anderson Hill Quadruler. Dam: San-De-Lin Fiona. For photos please call (616)608-2935. 11/28

**Order now for Christmas!** "The Galloway in America," a book devoted entirely to Galloway Cattle... a limited edition hardcover with 175 pages and more than 300 illustrations in color and b/w. Send \$52.00 which includes shipping and handling to Galloway Historical Library, 28289 Norris Rd., Bozeman, MT 59718. See web page for more details and online ordering. www.gallowayhistlib.com or email pruitghl@msn.com. 11/23

**WISCONSIN.** Registered Black and Dun Beltie cows and heifers for sale (bred), many with 2009 calves at side. Cows may be purchased separately from calves. Blueberry Ridge Farm, Milladore, Wisconsin. Please call Jeff or Ann (715) 457-6157. 11/23

**OHIO.** Registered Cow d.o.b. 08/20/04 #23690B with bull calf 08/07/09 at side. Registered cow d.o.b. 03/03/02 #20030B. Bull #11639B, d.o.b. 7/12/07 & Bull #11643B d.o.b. 05/12/08. All halter broke and shown in 4-H at county fair. All black & white belts. Please call Don Stine (419) 957-7262 or email

**Malabar Farm Blossom Ridge Farm**  
**Loren A. Olson, M. D. and Doug Mortimer**



3032 Settlers Trail St. Charles, IA 50240-8564  
 Ph: 641-765-4356 www.BeltieFarms.com

**Little Everglades Ranch**  
 Bob & Sharon Blanchard  
 Jordan Road  
 Dade City, Florida 33523



**Registered Belted Galloways**  
 ~ Breeding and selling bulls & heifers  
 ~ Purebred five generation pedigrees  
 <lerranch@earthlink.net>  
 Barn: (352) 521-0366 Fax: (352) 521-0377

**RED BARN FARMS**



4960 W. Rd. 150 N• Bargersville, IN • 46106  
 H 317-422-8137 • M 317-409-6857  
 RedBarnFarms.dsa@live.com

**David, Leanne, Ross, Rachel & Ryan Fogle**  
 waysidevalleybeltedgalloway.com  
 (309) 965-2759  
 leannef@mtco.com  
 Congerville, IL



**Wayside Valley Farm**

djstine@thewavz.com. 11/21

**ILLINOIS.** For Sale Registered grassfed Black Beltie bull Willow Branch Thomas 11461B (dob 10/1/07) Sire: Sunbelt Hitchcock Dam: Almar Kahola, pictures and pedigree available upon request. Willow Branch Farms Joe Puckett 5030 W. Hilvety Road, Moweaqua, IL 62550. Please call (217) 768-3857 or email jpuckett2854@frontiernet.net. 11/21

**WISCONSIN.** For sale 2 registered black Beltie bulls. Shaner Farm Mr. T (ET) 11495B, d.o.b. 10/24/07. Mr. T is a tall long bull, currently weighing 1500-1600lbs. Excellent confirmation and markings. He is halter broke and has been shown. Sire is Roland's High Interest(AI) and dam is Cider Mill Mandy. Grand-sires are Shiralee Moonshine and Bolbec Dun Controller. 2nd bull is Hunt Club Farms Winterstorm 11855B, d.o.b. 3/22/09, birth weight 70lbs. He has excellent markings and confirmation for his age. Storm is halter broke and has been shown. He will make an excellent addition to anyones herd. Pictures of sire and dam available. Contact Hunt Club Farms, Matt Ellerbrock (262) 206-9452 or huntclubbelties@hotmail.com for more information, pictures and pedigrees. 11/10

**TEXAS.** Offering one registered black belted bull calf, Double Creek Kris Kringle 11859B, born 12/24/08. Gorgeous conformation and fancy wide belt, by Oceola Lyle (son of Prock Ridge Wally) out of JFR Atlantic Dolly (Sleepy Creek, Maple Brae bred). Also accepting deposit for nicely marked registered

heifer, by Oceola Lyle and out of Double Creek Cloud (Stonecroft, Aldemere, Sleepy Creek). Please call or email for pictures. Jack & Marilyn Pryor, Double Creek Ranch, Troup, TX. (903)842-3539, email gr8jrt@yahoo.com. Website: www.doublecreekranch.weebly.com. 11/10

**VIRGINIA.** Bull for hire, proven breeder, Hospitality Cliff 11587B, d.o.b. 1-12-2008, excellent coloring and form, will travel in Virginia, contract terms negotiable. Clift Houston, Little Turkey Hill Farm, Ashland, Virginia. Call (804) 798-1532 or (804) 239-3686. 11/6

**MAINE.** Registered black Beltie heifer, d.o.b. 4/6/09. Aldemere Micky II daughter out of Basin Brook Casey. Excellent conformation and markings. Dave Sinclair, Deer Brook Farm, Wayne, Maine. Call (207) 685-4693 or email dave@DiveFishMaine.com. 11/6

**ILLINOIS.** Bull for Sale. Walnut Hill Samson 10895B, d.o.b. 05/19/2006. Very good looking. Produces nice calves. Great bloodline. Contact Cynthia Gumbart, Breezy Morning Farm, Macomb, Illinois. Please call (309) 837-6772 or (309) 255-5750 or e-mail at jccg1@logonix.net. 11/5

**CONNECTICUT.** Registered Belted Galloways for sale: Open yearlings heifers, two year old open heifers and cow-calf pairs. Bull, Marben's Carillon 11895B, d.o.b. 8/13/08. Call Tiggie Gerli at Marben Farm in Sharon, CT. 860-364-2161. 11/03

## Belted Galloway Society, Inc.

Laura Glassmann, Secretary <beltiecows@aol.com>

P.O. Box 316, Bendersville, PA 17306.

Phone (717) 677-9655 • Fax (717) 677-9755

Non-profit org.

U.S. Postage

PAID

Permit #1040

Leesburg, FL 34748



Belted Galloway Cattle  
Semen Available  
Breeding Stock

Jeffrey & Lisa Lovett

5600 S. Hickory Road  
Oregon, IL 61061

(815) 652-3789  
antietamfarm@dishmail.net  
www.antietamfarm.com

# Klover Horners FARM

JERRY & KATHI JURKOWSKI  
5418 YALE BRIDGE RD. • ROCKTON, IL 61072  
(815) 629-2306 or kkowski@aol.com



Females, bulls & semen available from some of the top cattle in the U.S.

## DRIFTWOOD PLANTATION



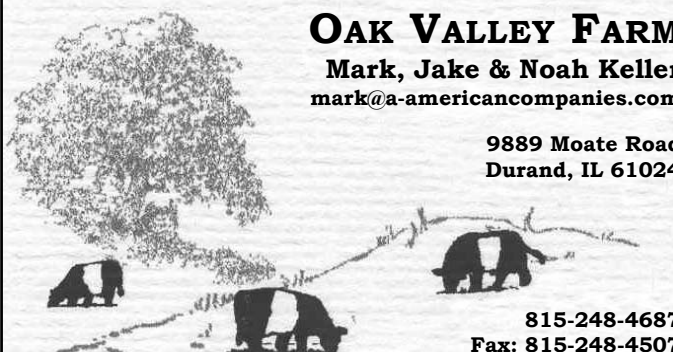
Box 615  
Pointing Brittany Lane  
Awendaw, SC 29429  
(843) 200-2046  
(843) 928-3983

"We are not as far away as it  
seems ... come visit us at  
<www.driftwoodplantation.com>  
or email us at  
<kjdriftwood@tds.net>  
for Belted Galloway  
Breeding Stock."

## OAK VALLEY FARM

Mark, Jake & Noah Keller  
mark@a-americancompanies.com

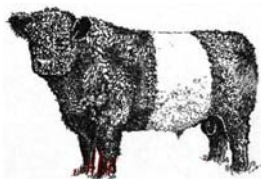
9889 Moate Road  
Durand, IL 61024



815-248-4687  
Fax: 815-248-4507

## HOLBROOK HILL FARM

World Class  
Genetics  
Imported  
Semen



Young Herd  
Sires  
Open Heifers  
available

Jane & Steven Silberberg  
47 Holbrook Hill Road  
Bedford, NH 03110

Phone: 603-472-2205  
Fax: 603-668-6470  
E-mail: hhfl8@aol.com

## Sunnybrook Farms



Breeding for quality,  
carcass & conformation  
Home of the  
2007 Female, Sire and Dam  
of the Year, 2008 Bull and Sire  
of the Year

Terry, Julie, Chris & Steve Willis  
(815) 547-6912  
sbfarms@hotmail.com  
Females, Bulls & Semen available